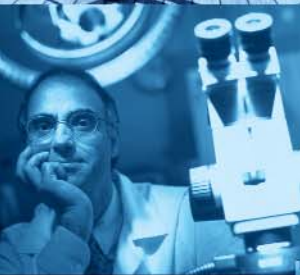


CP Series Callpoint



Features

- Integral LED indicator for easy identification of operation
- Surface or flush mounting
- Extensive range of conventional and analogue addressable callpoints
- Test key facility speeds maintenance visits
- Optional transparent hinged cover
- Hazardous areas models available
- IP67 Waterproof models for external applications



A comprehensive range of callpoints for use with both conventional and addressable systems.

All of the callpoints are designed to enable an alarm signal to be given by breaking a glass element which operates a switch and is indicated by a LED indicator. If required, an optional transparent hinged cover may be installed to guard against accidental operation.

Installation

Callpoints should be installed in accordance with the installation rules that apply. All call points may be surface mounted using a back box.

The CP200, CP2 10, CP270 and CP920 may be semi flush mounted if required with a single gang back box. With the waterproof models it is essential that the correct cable glands are used for cable entry to ensure that the protection rating is maintained.

Operating Principle

The switch is held off by the "edge" of the glass. When the glass is broken, the switch is released. This eliminates the risk of false alarms caused by glasses breaking on their own. A protective plastic coating on the glass prevents operator injury and inhibits the release of glass fragments. A hammer is not required.

Test Facility

When the special test key is inserted from the bottom, the glass drops and tests the switch.

Options

"No glass" (Resettable) Callpoints

All callpoints may be converted to "no glass" form by fitting the deformable operating element. This is particularly useful in kitchen or food processing areas, where the potential for fragments of broken glass is unacceptable.

Transparent Hinged Cover

Fitting the cover to any callpoint provides additional protection from accidental operation, often used in shopping centres and schools.

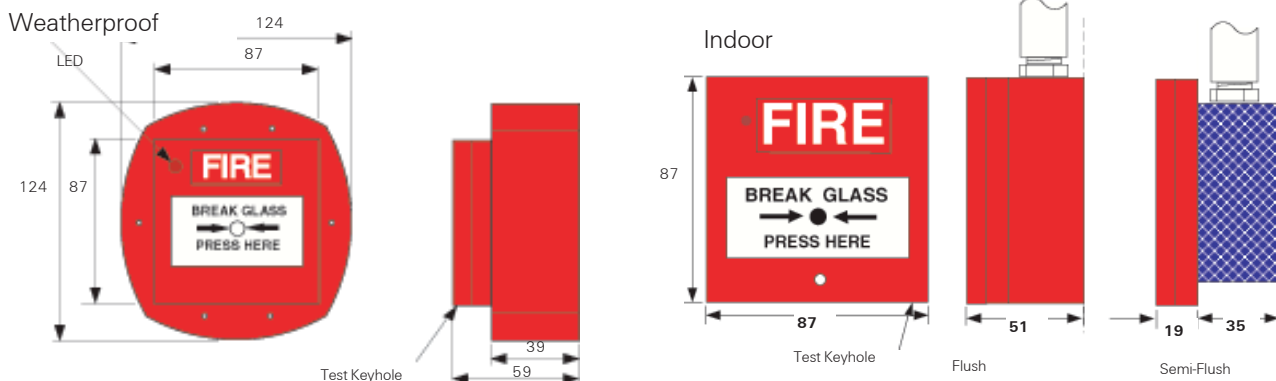
Physical Characteristics

Electrical

Switch Rating 100mA at 30vdc

Mechanical

Materials: Red Body - Modified Polyphenylene Oxide
Back Box - 15% Glass Reinforced Nylon 6



Technical Information

Model	Colour	Function Marking	Type	Range
CP200	Red	Fire	Conventional Alert	24D
CP2 10	Red	Fire Evacuate	Conventional Evacuate	24D
CP230	Red	Fire	Conventional Alert	67
CP220Ex	Red	Fire	Conventional Alert	67
CP270	Yellow	Evacuate	Conventional Evacuate	24D
CP520	Red	Fire	Addressable	24D
CP530	Red	Fire	Addressable	67
CP540Ex	Red	Fire	Addressable*	67
Keyswitch	White	Bomb Alarm	Conventional	24D

*Note: Requires IF500Ex Interface



The right is reserved to modify or withdraw any product or service without notice

Technical Information Sheet PSF036U Issue2

www.tycosafetyproducts-europe.com

©Tyco Safety Products 2004

